

YEAR 2007

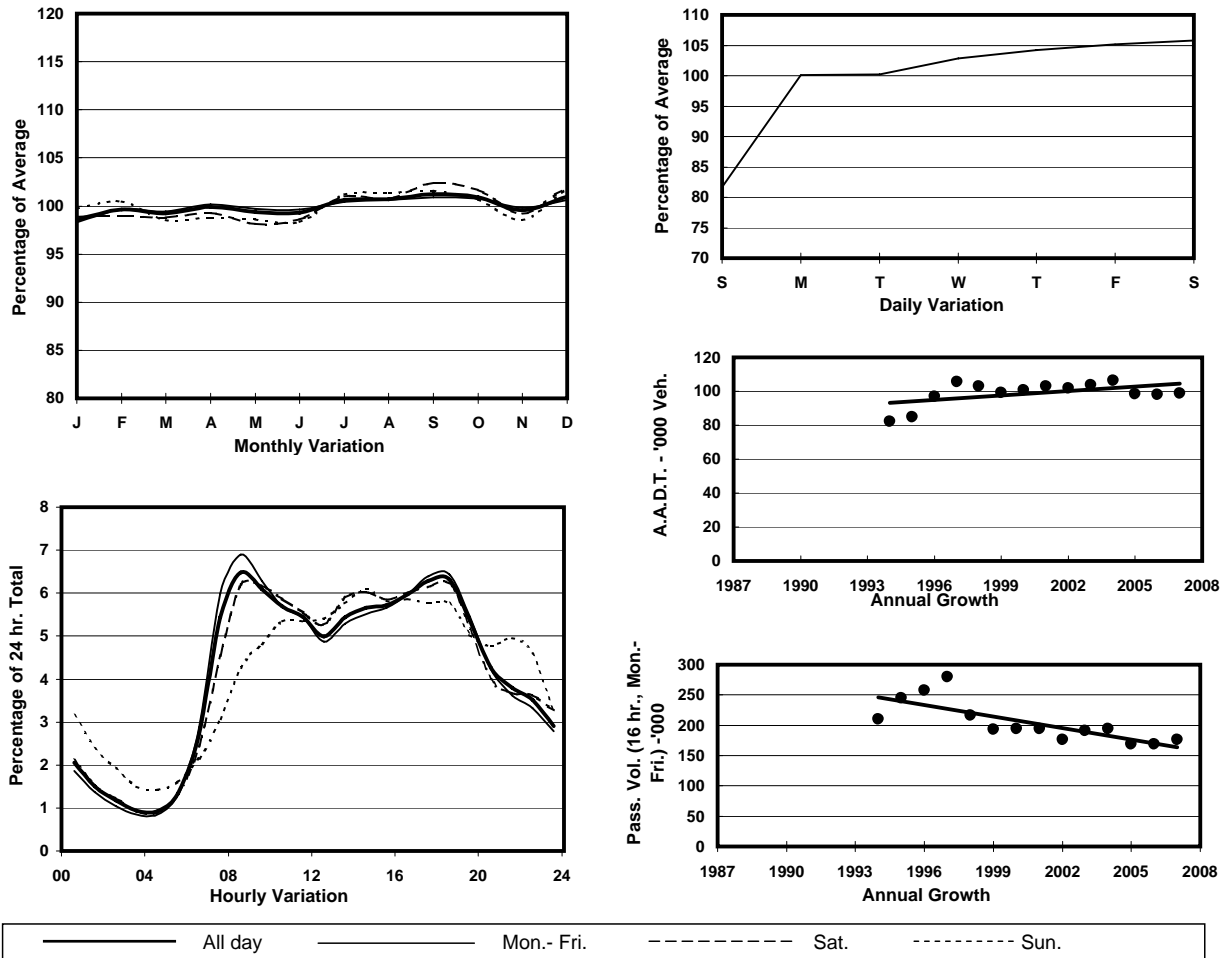
Location

Screenline Y-Y(Boundary between Tuen Mun & Yuen Long)

Stations on Cordon/Screenline

5025 and 6213

## 1. TRAFFIC FLOW VARIATION AND GROWTH



## 2. TRAFFIC CHARACTERISTICS (BY DIRECTION)

Parameter	All - Day	Mon. - Fri.	Sat.	Sun.
<b>EAST BOUND</b>				
A.A.D.T.	50060	51920	53690	40570
R 12 / 24 - %	71.1	72.1	71.2	64.7
R 16 / 24 - %	87.5	88.2	87	83.5
AM Peak Hour	0800-0900	0800-0900	0800-0900	0900-1000
One-way flow at AM peak hour	3290	3610	3420	2060
T - % (AM)	-	26	-	-
PM Peak Hour	1700-1800	1700-1800	1700-1800	1600-1700
One-way flow at PM peak hour	3200	3400	3300	2380
T - % (PM)	-	31.5	-	-
Prop.of commercial vehicles - 16 hr.	-	30.4	-	-
<b>WEST BOUND</b>				
A.A.D.T.	48750	50350	51980	40940
R 12 / 24 - %	67.8	68.7	68.3	61.9
R 16 / 24 - %	85.4	85.9	85.5	81.8
AM Peak Hour	0800-0900	0800-0900	0900-1000	0900-1000
One-way flow at AM peak hour	3110	3440	3120	1860
T - % (AM)	-	11.1	-	-
PM Peak Hour	1800-1900	1800-1900	1800-1900	1600-1700
One-way flow at PM peak hour	3110	3260	3300	2400
T - % (PM)	-	24.9	-	-
Prop.of commercial vehicles - 16 hr.	-	27.2	-	-

## 3. OTHER INFORMATION AND COMMENT

**4. Vehicle classification and occupancy - Monday to Friday**

Time		Class of vehicle									
		Motor	Private	Taxi	Private	PLB	Goods veh.		Non	Fr. Bus	
		Cycle	Car		LB		Light	M & H	Fr. Bus	SD	DD
0700-0800	Pro	2.9	26.5	11.0	1.1	3.9	23.1	23.0	7.1	0.1	1.1
	Ocp	1.1	1.4	2.0	6.6	13.4	1.5	1.1	7.1	10.7	17.4
0800-0900 Peak Hour	Pro	1.9	40.0	6.4	1.4	3.5	28.1	15.7	2.1	0.1	0.8
	Ocp	1.0	1.3	1.6	4.4	12.7	1.6	1.2	7.3	7.2	17.9
0900-1000	Pro	1.1	28.1	7.6	1.3	2.6	24.8	31.0	2.6	0.1	0.7
	Ocp	1.2	1.3	1.4	3.1	10.3	1.4	1.1	4.1	5.2	11.8
1000-1100	Pro	1.3	21.4	7.8	1.8	3.6	25.0	36.0	2.3	0.1	0.6
	Ocp	1.1	1.4	1.6	3.2	9.2	1.4	1.1	5.7	3.8	14.2
1100-1200	Pro	1.9	24.8	6.6	1.1	3.7	28.2	31.3	1.7	0.1	0.7
	Ocp	1.1	1.5	1.7	1.8	10.4	1.4	1.2	5.3	9.5	10.1
1200-1300	Pro	1.2	25.8	7.2	2.1	3.9	27.2	29.4	2.3	0.1	0.7
	Ocp	1.1	1.5	1.5	2.8	8.9	1.5	1.2	11.6	9.2	10.9
1300-1400	Pro	1.7	25.4	6.8	1.3	2.5	33.7	25.6	2.2	0.1	0.6
	Ocp	1.1	1.5	1.9	3.0	12.7	1.5	1.2	5.1	9.0	12.2
1400-1500	Pro	1.2	28.1	5.8	1.4	2.7	26.3	32.6	1.2	0.1	0.6
	Ocp	1.1	1.5	1.9	2.1	11.5	1.5	1.1	8.5	6.9	9.8
1500-1600	Pro	1.4	26.2	7.5	1.6	2.8	26.9	31.3	1.7	0.1	0.7
	Ocp	1.0	1.5	1.7	3.1	10.4	1.5	1.1	3.3	10.8	11.7
1600-1700	Pro	1.0	26.2	8.2	1.0	2.4	23.3	33.1	3.9	0.1	0.9
	Ocp	1.0	1.5	1.7	3.3	12.4	1.5	1.1	7.1	11.5	10.7
1700-1800	Pro	2.2	31.6	6.4	1.6	3.0	23.5	27.9	3.2	0.1	0.6
	Ocp	1.1	1.4	1.6	2.1	13.2	1.5	1.1	7.4	10.1	16.5
1800-1900	Pro	2.3	41.5	5.7	0.8	4.1	22.7	19.8	2.6	0.1	0.6
	Ocp	1.0	1.5	1.9	3.2	14.5	1.4	1.1	4.6	11.5	25.2
1900-2000	Pro	1.6	49.8	7.5	0.7	2.9	17.8	14.5	4.4	0.1	0.7
	Ocp	1.0	1.4	1.9	1.4	13.0	1.3	1.0	2.3	8.8	17.6
2000-2100	Pro	2.2	46.5	9.9	0.4	4.8	15.3	16.0	3.9	0.1	0.8
	Ocp	1.1	1.4	1.6	3.0	11.8	1.3	1.1	4.7	7.8	12.3
2100-2200	Pro	2.7	46.5	11.9	0.5	4.3	16.0	14.7	2.4	0.1	1.0
	Ocp	1.1	1.6	1.6	2.2	10.8	1.5	1.1	2.5	5.0	12.3
2200-2300	Pro	3.1	54.0	14.7	0.3	4.1	10.6	9.8	2.0	0.1	1.2
	Ocp	1.0	1.6	1.7	2.3	12.1	1.5	1.0	3.6	6.2	7.4
16 hours	Pro	1.8	33.0	7.9	1.2	3.4	23.9	25.1	2.9	0.1	0.7
	Ocp	1.1	1.4	1.7	3.1	11.8	1.5	1.1	5.8	8.3	13.8

**Legend**

- Pro.** Proportion of vehicles in % (Sum may not add up to 100% due to figure rounding)
- Ocp.** Average occupancy of vehicles
- M & H** Medium and Heavy